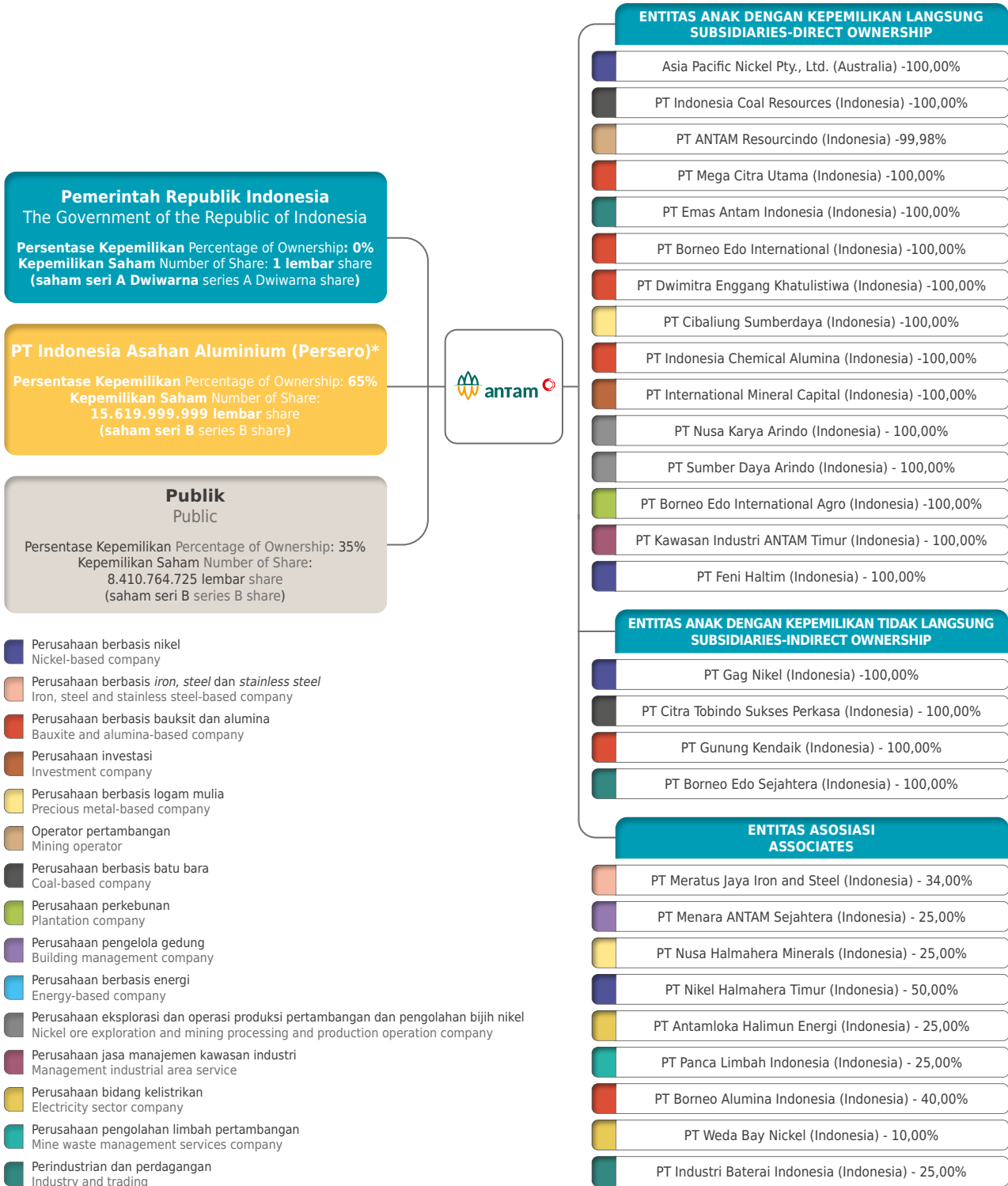




# Pemegang Saham Utama, Entitas Anak, dan Entitas Asosiasi

Major Shareholder, Subsidiaries, and Associates



(\*) Keterangan/Notes:  
Efektif pada tanggal 21 Maret 2023, PT Indonesia Asahan Aluminium telah mengembalikan seluruh kepemilikan saham Seri B ANTAM kepada Negara Republik Indonesia. Selanjutnya Negara Republik Indonesia mengalihkan saham Seri B ANTAM tersebut kepada PT Mineral Industri Indonesia (Persero).  
Effective on 21 March 2023, PT Indonesia Asahan Aluminium has returned overall ownership of Series B shares of the Company to the State of Republic of Indonesia. Thus the State of republic of Indonesia has transferred the Series B shares of the Company to PT Mineral Industri Indonesia (Persero).



# Entitas Anak

## Subsidiaries

No	Entitas Anak Subsidiaries	Domisili Domicile	Jenis Usaha Nature of Business	Persentase Kepemilikan Percentage of Ownership		Mulai Beroperasi Komersial Start of Commercial Operations	Jumlah Aset sebelum Eliminasi Total Assets before Elimination (disajikan dalam jutaan Rupiah)	
				31 Desember December, 2021	31 Desember December, 2022		31 Desember December, 2021	31 Desember December, 2022
<b>Kepemilikan Langsung Direct Ownership</b>								
1.	Asia Pacific Nickel Pty., Ltd. ("APN")	Australia	Perusahaan investasi Investment company	100,00%	100,00%	2003	1.141.819	1.254.913
2.	PT Indonesia Coal Resources ("ICR")	Indonesia	Perdagangan, transportasi dan jasa tambang batu bara Coal mining trade, transportation and services	100,00%	100,00%	2010	14.132	14.401
3.	PT Antam Resourcindo ("ARI")	Indonesia	Eksplorasi dan operator tambang Mining exploration and operator	99,98%	99,98%	1997	104.674	95.662
4.	PT Mega Citra Utama ("MCU")*	Indonesia	Konstruksi, perdagangan, perindustrian, pertanian dan pertambangan Construction, trading, industry, agriculture and mining	100,00%	100,00%	-	55.454	30.394
5.	PT Emas Antam Indonesia ("EAI")	Indonesia	Perindustrian dan perdagangan Industry and trading	100,00%	100,00%	-	58.320	112.143
6.	PT Borneo Edo International ("BEI")	Indonesia	Pembangunan, perdagangan, perindustrian, pertanian dan pertambangan Construction, trading, industry, agriculture and mining	100,00%	100,00%	-	53.494	52.990
7.	PT Dwimitra Enggang Khatulistiwa ("DEK")*	Indonesia	Eksplorasi dan operator tambang Mining exploration and operator	100,00%	100,00%	-	3.178	2.773
8.	PT Cibaliung Sumberdaya ("CSD")**	Indonesia	Eksplorasi, konstruksi dan pengembangan tambang, penambangan, produksi, pengolahan dan pemurnian, pengangkutan dan penjualan di industri emas Exploration, construction and mine development, mining, production, processing and refining, haulage and sales in the gold mining industry	100,00%	100,00%	2010	126.478	168.374
9.	PT Indonesia Chemical Alumina ("ICA")	Indonesia	Pengolahan dan pemurnian hasil tambang bauksit menjadi produk alumina, pengangkutan, perdagangan dan pendistribusian produk alumina Production and refinery of bauxite ore into alumina products, transportation, trade and distribution of alumina products	100,00%	100,00%	2010	2.623.306	2.690.548
10.	PT International Mineral Capital ("IMC")	Indonesia	Jasa dan perdagangan Services and trading	100,00%	100,00%	2011	622.021	621.932
11.	PT Nusa Karya Arindo ("NKA")	Indonesia	Eksplorasi dan operasi produksi pertambangan dan pengolahan bijih nikel Nickel ore exploration and mining processing and production operation	100,00%	100,00%	2014	5.949	385.464***



No	Entitas Anak Subsidiaries	Domisili Domicile	Jenis Usaha Nature of Business	Persentase Kepemilikan Percentage of Ownership		Mulai Beroperasi Komersial Start of Commercial Operations	Jumlah Aset sebelum Eliminasi Total Assets before Elimination (disajikan dalam jutaan Rupiah)	
				31 Desember December, 2021	31 Desember December, 2022		31 Desember December, 2021	31 Desember December, 2022
12.	PT Sumberdaya Arindo ("SDA")	Indonesia	Eksplorasi dan operasi produksi pertambangan dan pengolahan bijih nikel Nickel ore exploration and mining processing and production operation	100,00%	100,00%	2015	28.583	503.855***
13.	PT Borneo Edo International Agro ("BEIA")*	Indonesia	Perkebunan, perindustrian, pengangkutan hasil perkebunan, perdagangan dan jasa Agriculture, industry, agricultural land transportation, trading and services	100,00%	100,00%	-	42	42
14.	PT Kawasan Industri Antam Timur ("KIAT")	Indonesia	Jasa manajemen kawasan industri Management service of industrial area	100,00%	100,00%	-	44	44
15.	PT Feni Haltim ("FHT")	Indonesia	Perdagangan, pembangunan dan jasa Trading, construction and services	100,00%	100,00%	2016	540.328	514.418
<b>Kepemilikan Tidak Langsung Indirect Ownership</b>								
16.	PT Gag Nikel ("GAG") (melalui APN/ through APN)	Indonesia	Eksplorasi dan operator tambang nikel Nickel mining exploration and operator	100,00%	100,00%	2018	1.140.596	1.252.068
17.	PT Citra Tobindo Sukses Perkasa ("CTSP") (melalui ICR/ through ICR)	Indonesia	Eksplorasi dan operator tambang batu bara Coal mining exploration and operator	100,00%	100,00%	2011	8.673	9.159
18.	PT Gunung Kendaik ("GK")* (melalui MCU/ through MCU)	Indonesia	Pembangunan, perdagangan, perindustrian, pertanian, pengangkutan darat, jasa, pertambangan dan percetakan Construction, trading, industry, agriculture, ground transportation, services, mining and printing	100,00%	100,00%	-	6.977	6.044
19.	PT Borneo Edo Sejahtera ("BEST")* (melalui IMC dan BEI/through IMC and BEI)	Indonesia	Jasa, perdagangan, dan perindustrian Services, trade and industry	100,00%	100,00%	-	45	1.464

\* Sampai dengan 31 Desember 2022 masih berstatus "Dormant".  
Status still "Dormant" as of 31 December 2022.

\*\* Berhenti beroperasi Mei 2022 dan memulai aktivitas pasca tambang pada Juni 2022.  
Stopped operations in May 2022 and started post-mining activities in June 2022.

\*\*\* Kenaikan aset berasal dari pengalihan sebagian bisnis pertambangan nikel Perusahaan kepada SDA dan NKA. Namun, transaksi tersebut tidak berdampak atas laporan keuangan konsolidasian Perusahaan.  
The increase in assets results from the transfer of a portion of the Company's nickel mining business to SDA and NKA. However, such transaction does not have any impact on the Company's consolidated financial statements.



# Entitas Asosiasi

## Associates Entities

Perusahaan Companies	Informasi Entitas Asosiasi Associates Entities Information	Lokasi Bisnis Business Location	Total Investasi Total Investment (Rp Juta   Million)		Kepemilikan Interest Held	
			2021	2022	2021	2022
PT Nusa Halmahera Minerals	Mengoperasikan tambang emas bawah tanah di Kabupaten Halmahera Utara, Provinsi Maluku Utara. Operates a gold underground mine at North Halmahera Regency, North Maluku Province.	Indonesia	649.550	495.082	25%	25%
PT Weda Bay Nickel	Mengoperasikan tambang nikel dan kobalt serta pabrik pengolahan nikel di Teluk Weda, Kabupaten Halmahera Tengah dan Kabupaten Halmahera Timur, Provinsi Maluku Utara. Operates a nickel and cobalt mine, as well as nickel processing plant, at Teluk Weda, Central Halmahera Regency and East Halmahera Regency, North Maluku Province.	Indonesia	586.825	1.726.752	10%	10%
PT Borneo Alumina Indonesia	Entitas asosiasi ANTAM dan PT Inalum (Persero) dengan kepemilikan saham masing-masing di PT BAI sebesar 40% dan 60%. Didirikan dengan maksud dan tujuan untuk membangun Proyek Smelter Grade Alumina Refinery (SGAR) di Mempawah, Kalimantan Barat. Associated entities of ANTAM and PT Inalum (Persero), with shareholdings of 40% and 60%, respectively. Established with the intent and purpose to build the Smelter Grade Alumina Refinery (SGAR) Project in Mempawah, West Kalimantan.	Indonesia	499.110	406.462	40%	40%
PT Industri Baterai Indonesia	Perusahaan patungan yang didirikan oleh Pemerintah melalui empat perusahaan Badan Usaha Milik Negara (BUMN) sektor pertambangan dan energi. Didirikan sebagai holding untuk mengelola ekosistem industri baterai kendaraan bermotor listrik ( <i>Electric Vehicle Battery</i> ) yang terintegrasi dari hulu hingga hilir. A joint venture established by the Government through four State-Owned Enterprises (BUMN) in the mining and energy sectors. Established as a holding company to manage the integrated electric vehicle battery industry ecosystem from upstream to downstream.	Indonesia	27.929	72.422	25%	25%
PT Menara Antam Sejahtera	Mengelola gedung perkantoran ANTAM Tower B yang berlokasi di ANTAM Office Park, Tanjung Barat, Jakarta. Manages ANTAM's office building Tower B is located at ANTAM Office Park, Tanjung Barat, Jakarta.	Indonesia	6.876	7.260	25%	25%
PT Nikel Halmahera Timur	Bergerak di bidang pertambangan nikel di Kabupaten Halmahera Utara, Provinsi Maluku Utara. Engages nickel mining activities at North Halmahera Regency, North Maluku Province.	Indonesia	28	28	50%	50%
PT Antamloka Halimun Energi	Bergerak di bidang kelistrikan, yang mencakup konsultasi, konstruksi, perawatan, dan pengembangan teknologi terkait pembangkit listrik. Engages in the electricity sector, including consultancy, construction, maintenance, and development of technology relating to electricity.	Indonesia	50	50	25%	25%
PT Nasional Hijau Lestari	Bergerak di bidang jasa pengolahan limbah pertambangan. Engages in the mine waste management services.	Indonesia	-	0	25%	25%
PT Meratus Jaya Iron and Steel	Mengoperasikan pabrik sponge iron di Kabupaten Tanah Bumbu, Provinsi Kalimantan Selatan. Operates a sponge iron plant at Tanah Bumbu Regency, South Kalimantan Province.	Indonesia	0	0	34%	34%
PT Antam Niterra Haltim	Bergerak di bidang pertambangan mineral. Engages in mineral mining.	Indonesia	0	0	30%	30%

PT Weda Bay Nickel (PT WBN) adalah satu-satunya entitas asosiasi yang material bagi Perusahaan. Berikut ini merupakan ringkasan atas informasi keuangan dari PT WBN:

PT Weda Bay Nickel (PT WBN) is the only associate which is material to the Company. Set out below is the summarised financial information for WBN:

Perusahaan Companies	Laba Bersih Net Profit (Rp Juta   Million)		(Rugi)/Penghasilan Komprehensif Lain Other Comprehensive Income/(Loss) (Rp Juta   Million)		Jumlah Penghasilan/(Kerugian) Komprehensif Total Comprehensive Income/(Loss) (Rp Juta   Million)	
	2021	2022	2021	2022	2021	2022
PT WBN	4.830.097	10.185.323	-	(203)	4.830.097	10.185.120